

ALUCA

EASE YOUR WORK

A PLACE FOR
EVERYTHING
AND EVERYTHING
IN ITS PLACE



THE ALUCA METABOX SYSTEM



ALUCA METABOX: THE MODULAR SYSTEM FOR ANY CHALLENGE.

VERSATILE

The metaBox is available in different sizes; they are stackable and can be coupled.

COMPATIBLE

The adapter plate can also be used to integrate other common box systems.

OPTIMAL ORGANIZATION

The metaBox case system offers an ideal solution for transport and storage – whether in the service vehicle, in the workshop or on the construction site.

DURABLE

Thanks to the high-quality and extremely non-breakable ABS material, the metaBox easily withstands even heavy stresses and strains.

MOBILE

A trolley makes it easy to transport. Each case can be equipped with a lid handle, making it possible to carry entire stacks with one hand.

CERTIFIED

The metaBox boasts UN approval for transporting rechargeable battery packs of > 100 Wh.

EFFICIENT AND FLEXIBLE OUR MODULAR BOX SYSTEM



OPEN IN A GROUP

Whether in the workshop, in the service vehicle or in the warehouse – you have access to the contents of each individual metaBox at any time without having to remove or cumbersome move other boxes.

FOR ANY REQUIREMENT

All metaBoxes are fully compatible with each other. Whether you need a compact solution for limited space requirements or a comprehensive system for maximum storage capacity, the metaBoxes adapt to your requirements and always offer an optimal solution.



UNLIMITED COMBINATIONS ALL THANKS TO ONE ADAPTER PLATE

With the metaLink adapter plate, other box systems can be seamlessly integrated into the ALUCA system. The adapter plate is fitted with special connections that enable the connecting several case systems. It is compatible with DeWalt TSTAK, Festool T-LOC, HiKOKI HIT-System, BS Systems L-Boxx and Makita MAKPAC box systems. It boasts a durable and lightweight construction. The adapter plate can also be used as a small parts organiser, making it ideal for bits and screws.



metaLink adapter plate compatible with:



DeWalt TSTAK



Festool T-LOC



HiKOKI HIT-System



BS Systems L-Boxx



Makita MAKPAC

XS63



metaBox XS63 Art no. 114870

Exterior dimensions (W x D x H): 252 x 167 x 63 mm, interior dimensions: 237 x 167 x 63 mm, weight: 0.4 kg, material: ABS

- Intelligent transport and storage system for small parts and accessories
- Transparent lid for a perfect overview
- Robust and non-breakable thanks to its material and shape
- Optimal protection of accessories and small parts against dirt and moisture (IP43)
- Easy to stack and couple
- Convenient lid handle for carrying several boxes in a stack
- A box in a stack can easily be opened without decoupling it
- Can be used as a lunchbox thanks to the food-safe, dishwasher-safe plastic



metaBox XS63 divider Art no. 114906

- Divider for metaBox XS63

S118



metaBox S118 Art no. 114871

Exterior dimensions (W x D x H): 396 x 296 x 118 mm, interior dimensions (W x D x H): 379 x 268 x 83 mm, weight: 1.3 kg, box volume: 8.4 l, max. load capacity of lid: 125 kg, material: ABS

- Intelligent transport and storage system for mobile working
- Extremely robust and non-breakable thanks to its material and shape for maximum load capacity
- Optimal protection of machinery and accessories against dirt and moisture (IP43)
- Quick and easy to stack and couple the boxes
- A box in a stack can easily be opened without decoupling it
- Convenient front handle, allowing boxes to be carried close to the body, and an extra-wide lid handle, allowing multiple boxes to be carried in a stack



metaBox S118 organiser Art no. 114872

Exterior dimensions (W x D x H): 396 x 296 x 118 mm, interior dimensions (W x D x H): 379 x 268 x 83 mm, weight: 1.3 kg, box volume: 8.4 l, material: ABS

- The metaBox S118 organiser comes with a transparent lid. This helps you with organisation, as you always have an overview of everything without having to open the toolbox.
- Intelligent transport and storage system for mobile working
- Extremely robust and non-breakable thanks to its material and shape for maximum load capacity
- Optimal protection of machinery and accessories against dirt and moisture (IP43)
- Quick and easy to stack and couple the boxes
- A box in a stack can easily be opened without decoupling it
- Convenient front handle, allowing boxes to be carried close to the body, and an extra-wide lid handle, allowing multiple boxes to be carried in a stack

S118



metaBox S118 sorter Art no. 114901

- Deep-drawn insert for sorting the metaBox S118 and metaBox S118 organiser
- Cover film S
- Pins for cover film, set of 4



metaBox S118 sorter Art no. 114901

- Deep-drawn insert for sorting the metaBox S118 and metaBox S118 organiser
- Cover film S
- Pins for cover film, set of 4



metaBox S118 divider Art no. 114907

- Divider for the metaBox S118 and metaBox S118 organiser

S145



metaBox S145 Art no. 114873

Exterior dimensions (W x D x H): 396 x 296 x 145 mm, interior dimensions (W x D x H): 379 x 268 x 110 mm, weight: 1.57 kg, box volume: 11.2 l, max. load capacity of lid: 125 kg, material: ABS

- Intelligent transport and storage system for mobile working
- Extremely robust and non-breakable thanks to its material and shape for maximum load capacity
- Optimal protection of machinery and accessories against dirt and moisture (IP43)
- Quick and easy to stack and couple the boxes
- A box in a stack can easily be opened without decoupling it
- Convenient front handle, allowing boxes to be carried close to the body, and an extra-wide lid handle, allowing multiple boxes to be carried in a stack



metaBox S145 sorter Art no. 114903

- Deep-drawn insert for sorting the metaBox S145
- InBOX2 set
- Divider for InBOX2



metaBox S145 divider Art no. 114908

- Divider for metaBox S145

S215



metaBox S215

Art no. 114874

Exterior dimensions (W x D x H): 396 x 296 x 215 mm, interior dimensions (W x D x H): 379 x 268 x 180 mm, weight: 1.92 kg, box volume: 18.3 l, max. load capacity of lid: 125 kg, material: ABS

- Intelligent transport and storage system for mobile working
- Extremely robust and non-breakable thanks to its material and shape for maximum load capacity
- Optimal protection of machinery and accessories against dirt and moisture (IP43)
- Quick and easy to stack and couple the boxes
- A box in a stack can easily be opened without decoupling it
- Convenient front handle, allowing boxes to be carried close to the body, and an extra-wide lid handle, allowing multiple boxes to be carried in a stack
- The perfect storage box for all small items, hand tools or as a complement to larger tool sets



metaBox S215 divider

Art no. 114909

- Divider for metaBox S215

S340



metaBox S340

Art no. 114875

Exterior dimensions (W x D x H): 396 x 296 x 340 mm, interior dimensions (W x D x H): 379 x 268 x 305 mm, weight: 2.51 kg, box volume: 31.0 l, max. load capacity of lid: 125 kg, material: ABS

- Intelligent transport and storage system for mobile working
- Extremely robust and non-breakable thanks to its material and shape for maximum load capacity
- Optimal protection of machinery and accessories against dirt and moisture (IP43)
- Quick and easy to stack and couple the boxes
- A box in a stack can easily be opened without decoupling it
- Convenient front handle, allowing boxes to be carried close to the body, and an extra-wide lid handle, allowing multiple boxes to be carried in a stack



metaBox S340 divider

Art no. 114910

- Divider for metaBox S340

M95



metaBox M95

Art no. 114876

Exterior dimensions (W x D x H): 440 x 346 x 95 mm, interior dimensions (W x D x H): 417 x 314 x 58 mm, weight: 1.52 kg

- Versatile and high-quality box made of impact-resistant ABS
- Can hold 48 units of 1x1 assortment boxes
- Also ideal for foam or thermoformed trays
- Transparent lid provides a view of the contents
- Also suitable for the Sortimo inset box H3



metaBox M95 inset set

Different assortment boxes can be arranged as desired.

Models	Art no.
Inset box set for M95 – red (48 pieces)	114887
Inset box set for M95 – green (8 pieces)	114888
Inset box set for M95 – blue (12 pieces)	114889
Inset box set for M95 – mixed	114890

M145



metaBox M145

Art no. 114877

Exterior dimensions (W x D x H): 496 x 346 x 145 mm, interior dimensions (W x D x H): 429 x 317 x 110 mm, weight: 1.95 kg, box volume: 14.1 l, max. load capacity of lid: 125 kg, material: ABS

- Intelligent transport and storage system for mobile working
- Extremely robust and non-breakable thanks to its material and shape for maximum load capacity
- Optimal protection of machinery and accessories against dirt and moisture (IP43)
- Quick and easy to stack and couple the boxes
- A box in a stack can easily be opened without decoupling it
- Convenient front handle, allowing boxes to be carried close to the body, and an extra-wide lid handle, allowing multiple boxes to be carried in a stack



metaBox M145 divider

Art no. 114911

- Divider for metaBox M145

L145

metaBox L145 Art no. 114878

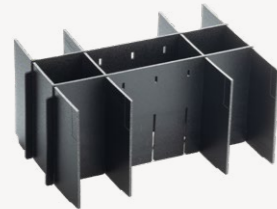
Exterior dimensions (W x D x H): 496 x 296 x 145 mm, interior dimensions (W x D x H): 479 x 268 x 130 mm, weight: 1.95 kg, box volume: 16.7 l, max. load capacity of lid: 125 kg, material: ABS



- Intelligent transport and storage system for mobile working
- Extremely robust and non-breakable thanks to its material and shape for maximum load capacity
- Optimal protection of machinery and accessories against dirt and moisture (IP43)
- Quick and easy to stack and couple the boxes
- A box in a stack can easily be opened without decoupling it
- Convenient front handle, allowing boxes to be carried close to the body, and an extra-wide lid handle, allowing multiple boxes to be carried in a stack

metaBox L145 sorter Art no. 114905

- Deep-drawn insert for sorting the metaBox L145
- InBOX2 set
- Divider for InBOX2
- Cover film L
- Pins for cover film, set of 4



metaBox L145 divider Art no. 114913

- Divider for metaBox L145

L165

metaBox L165 Art no. 114879

Exterior dimensions (W x D x H): 496 x 296 x 165 mm, interior dimensions (W x D x H): 479 x 268 x 110 mm, weight: 1.85 kg, box volume: 14.1 l, max. load capacity of lid: 125 kg, material: ABS



- Intelligent transport and storage system for mobile working
- Extremely robust and non-breakable thanks to its material and shape for maximum load capacity
- Optimal protection of machinery and accessories against dirt and moisture (IP43)
- Quick and easy to stack and couple the boxes
- A box in a stack can easily be opened without decoupling it
- Convenient front handle, allowing boxes to be carried close to the body, and an extra-wide lid handle, allowing multiple boxes to be carried in a stack

metaBox L165 divider Art no. 114912

- Divider for metaBox L165

L280

metaBox L280 Art no. 114880

Exterior dimensions (W x D x H): approx. 496 x 296 x 280 mm, interior dimensions (W x D x H): 479 x 268 x 245 mm, weight: 2.5 kg, box volume: 14.1 l, max. load capacity of lid: 125 kg, material: ABS



- Intelligent transport and storage system for mobile working
- Extremely robust and non-breakable thanks to its material and shape for maximum load capacity
- Optimal protection of machinery and accessories against dirt and moisture (IP43)
- Quick and easy to stack and couple the boxes
- A box in a stack can easily be opened without decoupling it
- Convenient front handle, allowing boxes to be carried close to the body, and an extra-wide lid handle, allowing multiple boxes to be carried in a stack

XL185

metaBox XL185 Art no. 114881

Exterior dimensions (W x D x H): 596 x 396 x 185 mm, interior dimensions (W x D x H): 577 x 361 x 148 mm, weight: 3.5 kg, max. load capacity of lid: 125 kg, material: ABS



- Intelligent transport and storage system for mobile working
- Extremely robust and non-breakable thanks to its material and shape for maximum load capacity
- Optimal protection of machinery and accessories against dirt and moisture (IP43)
- Quick and easy to stack and couple the boxes
- A box in a stack can easily be opened without decoupling it
- Convenient front handle, allowing boxes to be carried close to the body



THE QUICK-ACCESS TOOLBOX

If you need quick access to tools and consumables, the open toolBox is just the thing for you. The toolBox comes in four different sizes, and you can combine it with a metaBox in any other size. The handle locks into place after opening, which increases safety. You decide how the open toolBox is organised inside. Whatever you choose, you can transport up to 25 kg.



S118

toolBox S118

Art no. 114882

Exterior dimensions (W x D x H): 396 x 296 x 118 mm, interior dimensions (W x D x H): 379 x 268 x 113 mm, weight: 1.25 kg, volume: 8.6 l, material: ABS



- Stackable and ideal as the top unit
- Can be combined with all metaBox sizes
- Fast, universal transport solution for various tools
- Perfectly suited as a container for consumables
- Also suitable for transporting multiple metaBoxes 63XS
- Open design with integrated screwdriver holder
- High-quality and extremely non-breakable ABS
- Folding handle

S145

toolBox S145

Art no. 114883

Exterior dimensions (W x D x H): approx. 396 x 296 x 145 mm, interior dimensions (W x D x H): 379 x 268 x 140 mm, weight: 1.35 kg, volume: 11.3 l, material: ABS



- Stackable and ideal as the top unit
- Can be combined with all metaBox sizes
- Fast, universal transport solution for various tools
- Perfectly suited as a container for consumables
- Also suitable for transporting multiple metaBoxes 63XS
- Open design with integrated screwdriver holder
- High-quality and extremely non-breakable ABS
- Folding handle

S215

toolBox S215

Art no. 114884

Exterior dimensions (W x D x H): approx. 396 x 296 x 215 mm, interior dimensions (W x D x H): 379 x 268 x 210 mm, weight: 1.65 kg, volume: 18.4 l, material: ABS



- Stackable and ideal as the top unit
- Can be combined with all metaBox sizes
- Fast, universal transport solution for various tools
- Perfectly suited as a container for consumables
- Also suitable for transporting multiple metaBoxes 63XS
- Open design with integrated screwdriver holder
- High-quality and extremely non-breakable ABS
- Folding handle

S340

toolBox S340

Art no. 114885

Exterior dimensions (W x D x H): approx. 396 x 296 x 340 mm, interior dimensions (W x D x H): 379 x 268 x 335 mm, volume: 31.0 l, weight: approx. 2.2 kg, material: ABS

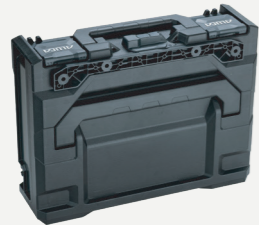


- Stackable and ideal as the top unit
- Can be combined with all metaBox sizes
- Fast, universal transport solution for various tools
- Suitable as a waste collector and container for consumables
- Extra-high box for safely stowing circular saws, spray foam, cartridges, spray cans, marking spray and much more
- Also suitable for transporting multiple metaBoxes 63XS
- Open design with integrated screwdriver holder
- High-quality and extremely non-breakable ABS
- Folding handle

ACCESSORIES FOR THE METABOX

The metaBox can stand, lie flat, hang, roll and carry other toolboxes. The sophisticated accessories make the box system even smarter and more flexible.

WORK SURFACE ADAPTER



Connection rail for metaBox

Art no. 114897

A metaBox tower can also be used as a mobile workbench: attach a connection rail to the underside of the work surface and place it on the metaBox tower. The knob on the top box connects it to the rail or work surface.

SHOULDER STRAP



Shoulder strap for metaBox

Art no. 114898

Why not carry a metaBox on your shoulder? Then your hands are free for other things. Simply insert the metal clip on the side of the box, attach the shoulder strap and adjust its length to suit your height. The metal clip fits on every metaBox apart from the small metaBox 63XS, but this can be coupled to a larger one.

SIDE BAG



metaBox side bag

Art no. 114900

Do you need to carry a tablet, plans or other documents? Put it all in the side bag! This frees up one hand and boosts your efficiency.

MOUNTING KIT FOR SHELVES

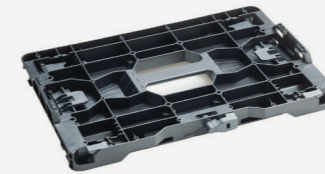


Mounting kit for metaBox and adapter plate on the shelf

Art no. 114924

With the metaConnect mounting kit, you can combine metaBoxes with the shelf without the adapter plate. All other types of boxes can be mounted using the metaLink adapter plate.

ADAPTER PLATE



metaLink adapter plate for third-party box systems

Art no. 114886

The adapter plate connects our metaBox system with compatible boxes from DeWalt, Festool, HiKOKI, Lbox, Makita and Stanley. This allows you to seamlessly integrate your existing boxes without having to use different systems.

As a versatile all-rounder, the adapter plate is also perfect for carrying small parts such as screws or dowels.

TROLLEY



Trolley for carrying metaBoxes

Art no. 114889

Why lug things around when you can push them around? If you have stacked several toolboxes to form a tower, you can conveniently and effortlessly push it around, whether standing behind or alongside the trolley.

WALL BRACKET



Wall bracket for metaBox

- Wall bracket suitable for ALUCA metaBoxes
- Three drill holes for easy screw-mounting
- Incorporates the box perfectly within the workshop
- Made entirely of steel

Models

Art no.

Wall bracket 25	114891
Wall bracket 32	114892
Wall bracket 42	114893
Wall bracket 52	114894

COVER FILM



Cover film for metaBox

- The cover film encloses tool and small parts trays, thus preventing small parts from falling out and getting mixed up
- Easy installation in the lid thanks to the included pins

Models

Art no.

Cover film for box size S	114895
Cover film for box size L	114896
Pins for cover film, set of 4	114846

ALUCA

ALUCA Rosengarten

Westring 1
74538 Rosengarten

T +49 791 950 40-0

E info@aluca.de

www.aluca-world.com

